
Facility Fusion Pre-Conference

WE + Sustainability = Your Competitive Advantage

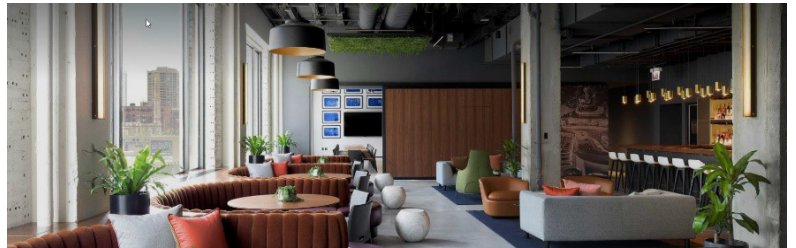
March 19th, 2018

Join WE (Workplace Evolutionaries) & ESUS (Sustainability) Communities at one of the largest sustainable buildings in the world, Chicago's Merchandise Mart (theMart), as we dive into the 3rd industrial revolution, its impacts on the built environment, and heed the "call to action"!



theMART is the world's largest commercial building and wholesale design center. It attained LEED Gold status in 2013. The Mart encompasses 4.2 million gross square feet, spans two city blocks, rises 25 stories, and is visited by an average of 25,000 people each business day. In total, nearly 10 million people visit theMART each year.

Located atop the Grand Stair on the 2nd floor, Marshall's Landing is theMART's center of gravity for gathering, socializing, eating, drinking, noshing, caffeinating and working. We will have an opportunity to learn more about theMart and participate in a brief tour as part of the day's events.



During World Workplace 2017, [Jeremy Rifkin](#), an American economic and social theorist, writer, public speaker, political advisor, and activist gave a compelling keynote on the 3rd Industrial Revolution, its impact on the built environment and the unique role of FM. He challenged us to take action which resonated deeply with both the Workplace Evolutionaries and the Sustainability Community. Together we have rallied to create an unforgettable session designed to expose "what's possible" and create a roadmap for bringing this competitive advantage to our organizations.

In addition, many of our global thought leaders promise to open your minds to the latest thinking in technology, IoT, data analytics, environmental psychology, well-being, energy and utilities management, and much more. We have sought out leading-edge case studies with key insights and learnings. To end the day, you will be guided through a powerful exercise designed to help you create your own, "unique action plans."

This session is for everyone involved in the built environment who hears this call, wants to engage in a meaningful discussion and play a role in leading this important initiative. This includes Facility Managers, Corporate Real Estate Executives, Workplace Strategists, Data Scientists, Technology and Sustainability Experts, Architects and Designers, and Change Leaders. You won't want to miss this!

Conference Sponsors



Facility Fusion Pre-Conference

WE + Sustainability = Your Competitive Advantage

Join the Workplace Evolutionaries (WE) & the Sustainability Community (ESUS) at one of the world's largest sustainable buildings, theMart, as we heed the "call to action" and dive into the 3rd industrial revolution, its impacts on the built environment, and why we are the one's we've been waiting for!

Date: March 19th 2018
Time: 8:30am – 6:30pm

Location:
[The Merchandise Mart](#)
222 Merchandise Mart Plaza
Chicago, IL 60654

Register: FacilityFusion.IFMA.org
Pricing:

Options	Member	Non-Member
WE + ESUS Pre-conference (for Facility Fusion Full Event attendees)	\$100	\$150
WE + ESUS Pre-Conference only	\$200	\$250

Agenda, March 19th:

8:30am	<p>Welcome, Introductions and Embracing the "Call to Action"</p> <p>Presenters: Bill O'Neill, IFMA Chairman of the Board, Univ. of Minnesota Kate North, Global Chair, WE and Managing Director, Workplace Innovation, Colliers International Dean Stanberry, Community Chair, ESUS and Director, FM Services, AbraxasFM Glenn Dirks, Workplace Strategist, Dirks Consulting WE Customer Enablement</p>
9:30am	<p>EXPLORING "WHAT'S POSSIBLE": Case Studies of Successful Sustainable Projects</p> <p>Moderator: Christopher H. Cayten, Principal, CodeGreen Solutions</p> <p>Presenters: – THE MERCHANDISE MART – Mark Bettin, Vice President, Engineering/Sustainability, Merchandise Mart Properties, Inc. – METHOD SOAP – Karl Heitman, Founder & President, Heitman Architects Inc. – COOK COUNTY – Dr. Ann Kalayil, Bureau Chief, Cook County, Bureau of Asset Management – THE EDGE – Jan-Hein Lakeman, Executive Managing Director USA, OVG Real Estate</p>
11:30am	Lunch Break
12:30pm	<p>MAKING IT HAPPEN: Leveraging Technology Exploring the Latest Technologies: What's here? What's coming? Why it matters?</p> <p>Moderator: Dean Stanberry, Community Chair, ESUS and Director, FM Services, AbraxasFM</p> <p>Panelists: Chris Zlocki, Head of Innovation, Colliers International Sonny Garg, Energy Solutions Lead, Uptake Ruairi Barnwell, Principal, DLR Group</p>
1:30pm	<p>MAKING IT HAPPEN: The Impact on Human Performance The truth about density and utilization; Sustainability as a way to attract talent; The connection to well-being and the new ROI; Psychological and behavioral implications.</p> <p>Moderator: Kate North, Global Chair, WE and Managing Director, Workplace Innovation, Colliers International</p> <p>Panelists: Shona O'Dea, Senior Associate, DLR Group Kate Lister, President, Global Workplace Analytics Dr. Sally Augustin, Principal, Design With Science Ellen Keable, Principal, Jacobs</p>
2:30pm	<p>MAKING IT HAPPEN: Managing Energy The new energy landscape: tools, resources and solutions to optimize energy performance and drive value in your organization.</p> <p>Moderator: Christopher H. Cayten, Principal, CodeGreen Solutions</p> <p>Panelists: Cindy Zhu, Building Technologies Office Fellow, U.S. Department of Energy Craig Haglund, Program Manager, ENERGY STAR, U.S. EPA Amy Jewel, Chicago Advisor, City Energy Project</p>
3:30pm	Break
3:45pm	<p>MAKING IT HAPPEN: Taking Action – Prioritizing your Sustainability Goals</p> <p>Facilitator: Shona O'Dea, Senior Associate, DLR Group</p>
5:00pm	Wrap up
5:15pm	Tour & Social Hour: Tour of the theMart's sustainable features. Sign-up on-site. Limited availability.

Join our IFMA Community Workplace Evolutionaries

WE Member Only Benefits:

- Monthly WE:binars
- WE KNOW: WE Briefs, Engage, and priority Research
- Discounts on Friends of WE special events
- Invitations to all WE Events, Tours and Pre- Conferences

Easy to Join!

- WE Website – WE.IFMA.org and click on "JOIN"
- Call IFMA membership at 713-623-4362