



workplace evolutionaries

A global Workplace community focused on
increasing Workplace Innovation & Consciousness

Our Speakers

 <p>Sr. WE Advisor Chris Hood, Managing Director, Workplace Innovation, CBRE</p>	 <p>Chair, Global Workplace Evolutionary Kate North, VP of Global Development e-Work.com</p>	 <p>President and Chief Executive Officer Tony Keane, CAE, International Facility Management Association</p>	 <p>Sr. WE Advisor Diane Coles, Director, Workplace Solutions, SCAN Health Plan</p>
 <p>IFMA Foundation Research Chair , Sr. WE Advisor Michael Schley, IFMA Fellow, CEO and Founder, FM: Systems</p>	 <p>President, CREC Sr. WE Advisor James P. Ware, PhD, Executive Director The Future of Work...unlimited</p>	 <p>IFMA Foundation Research Lead/ Sr. WE Advisor Nancy Sanquist, IFMA Fellow, AIA Associate, Vice President Marketing and Communications, Manhattan</p>	




A global Workplace community focused on
Increasing Workplace Innovation & Consciousness

Introducing



Kate North
Chair, Workplace Evolutionaries

VP of Global Development, e-Work.com



A global Workplace community focused on
Increasing Workplace Innovation & Consciousness

Our Focus

Expand Workplace Innovation
Empower People
Evolve the Workplace



A global Workplace community focused on
Increasing Workplace Innovation & Consciousness

WE Mission

- To co-create workplace knowledge that will enhance workforce collaboration, productivity and experience.
- We will achieve this by **bringing together members and thought leaders globally** to share new ideas and research which will evolve the profession of workplace strategists, facility managers and real estate professionals worldwide.



A global Workplace community focused on
Increasing Workplace Innovation & Consciousness

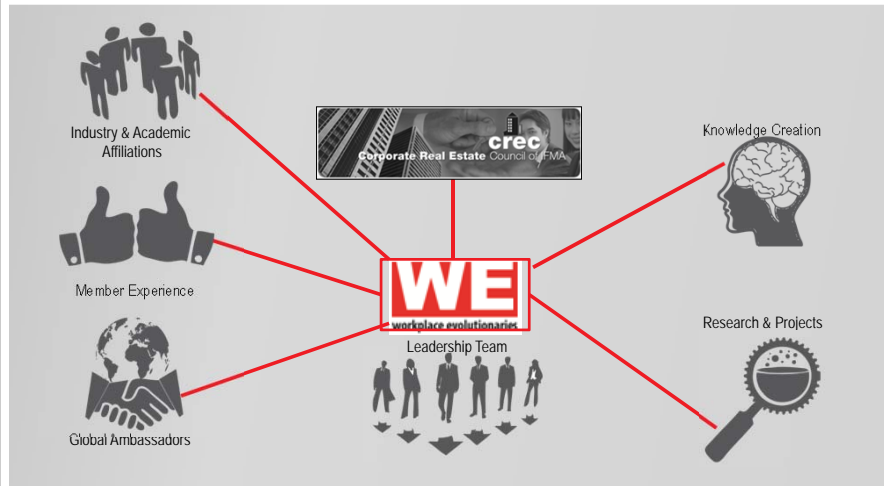
Guiding Principles

- Welcoming & Inclusive
- Curious & Open
- Attract Diverse Thinking and Experience
- Build Global Intelligence
- Leverage Relationships & Resources
- Have Fun!



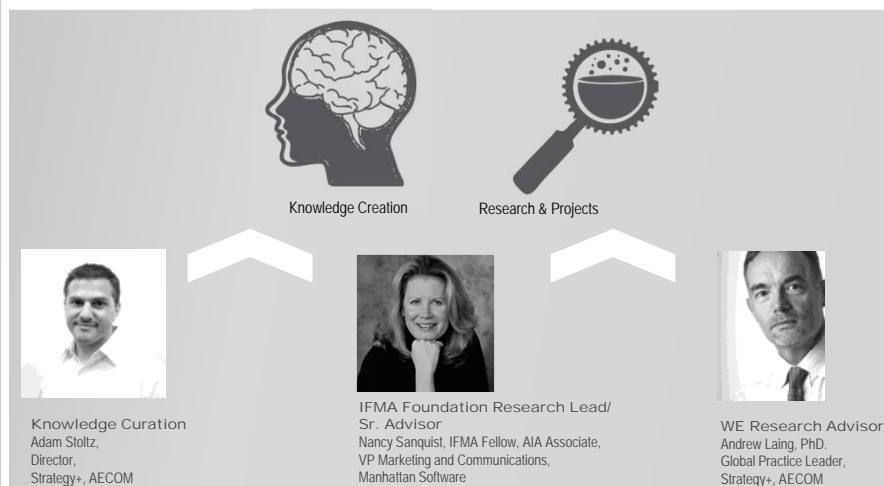
A global Workplace community focused on
Increasing Workplace Innovation & Consciousness

How WE are *Organized*

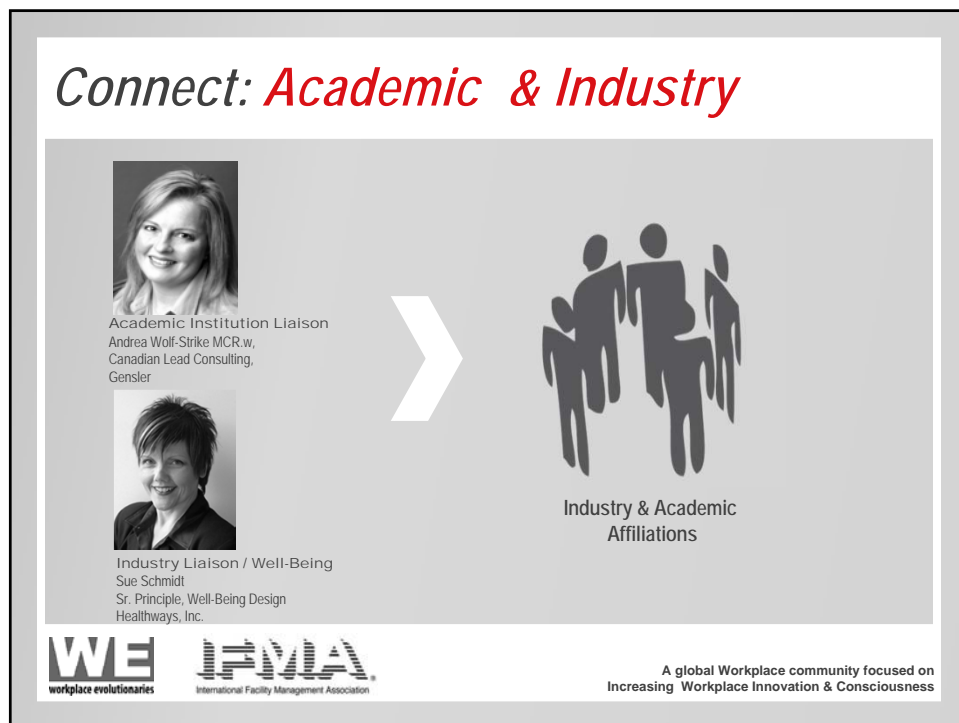
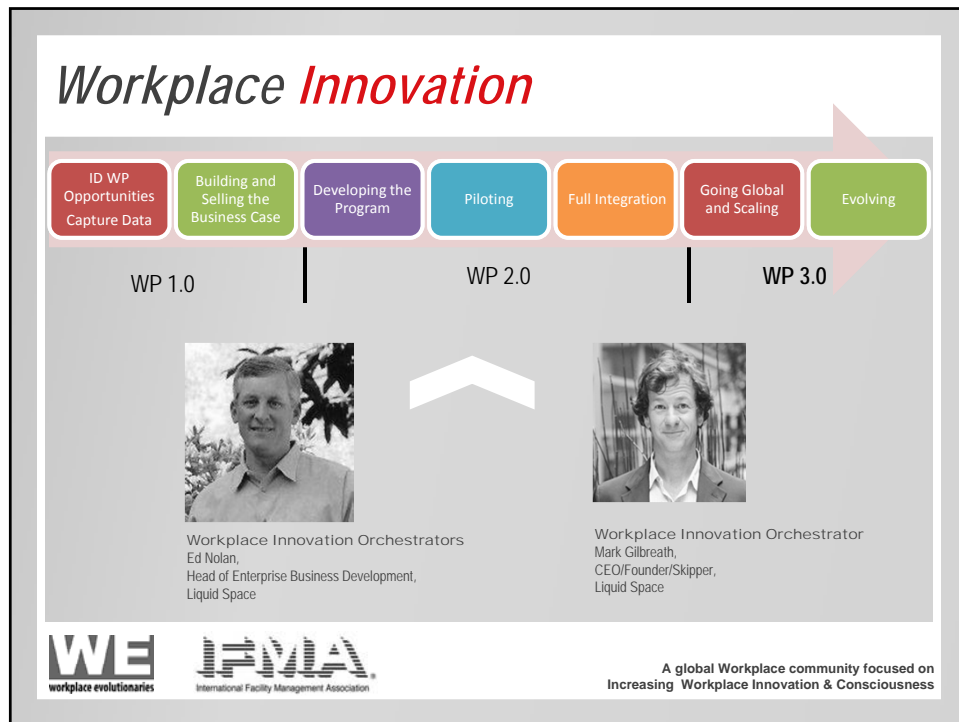


A global Workplace community focused on
Increasing Workplace Innovation & Consciousness

Research & *Curation*



A global Workplace community focused on
Increasing Workplace Innovation & Consciousness



Global WE *Ambassadors*

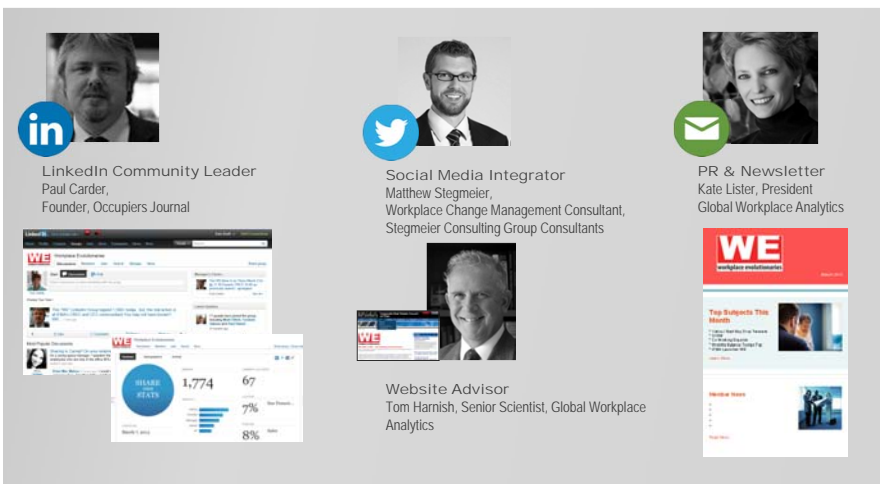


Global Ambassador Lead
Erik Jaspers
CTO
Planon



A global Workplace community focused on
Increasing Workplace Innovation & Consciousness

Sharing & *Connecting*



LinkedIn Community Leader
Paul Carder,
Founder, Occupiers Journal



Social Media Integrator
Matthew Stegmeier,
Workplace Change Management Consultant,
Stegmeier Consulting Group Consultants



PR & Newsletter
Kate Lisler, President
Global Workplace Analytics



Website Advisor
Tom Harnish, Senior Scientist, Global Workplace
Analytics



A global Workplace community focused on
Increasing Workplace Innovation & Consciousness

WE:binar *Series*



WE:binar Lead
Kay Sargent, , IIDA, CID, LEED AP® ID+C,
VP Architecture, Design &
Workplace Strategies, Teknion



Sr. WE Advisor
Chris Hood,
Managing Director, Workplace Innovation, CBRE

Proposed first six topics

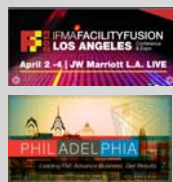
Criteria: best speakers, hot topics, non-politically affiliated

1. The rise, and rise again, of the City: Frank Duffy - **confirmed**
2. Well Being: John Blumenfeld, Sue Schmidt, Dr. Karen Lee & Joanna Frank
3. Chronotomology: Alexi Marmot
4. What's hot in research: Frank Becker
5. Co-Working: Mark Gilbreath and TBD
Human Capital Trends: TBD



A global Workplace community focused on
Increasing Workplace Innovation & Consciousness

Member *Experience*



Member Experience
Bryant Rice, AIA, LEED AP,
Vice President of Strategic Accounts, Sidemark



Chapter Learning Liaison
Melissa Marsh, Principal,
PLASTARC



A global Workplace community focused on
Increasing Workplace Innovation & Consciousness

Tracking Progress



Financial Tracking & Mgmt
Peter Icely
Newmark Grubb Knight Frank



Sr. Advisor / CREC Treasurer
Diane Coles, Director, Workplace Solutions
SCAN Health Plan



A global Workplace community focused on
Increasing Workplace Innovation & Consciousness

WE Membership

What you get....

- Research & Knowledge
- Workplace Innovation
- Leadership roles
- WE:binar
- Newsletter
- LinkedIn WE Groups
- Website
- Twitter
- Facility Fusion
- World Workplace
- WE Summit

WE
workplace evolutionaries
Becoming a member of WE is easy....

If you are:
A CREC or CFC member, you are already in! You don't need to do anything but participate.
An existing IFMA member, but not a member of CREC or CFC, you can join for \$100.00 by calling 1-713-423-4362 or contacting IFMA at membership@ifma.org.
If you are not an IFMA or CREC member and want to join WE, please call 1-713-423-4362. The cost to join is only \$234.00 annually for both the IFMA and CREC membership plus your local Chapter dues (required for first year IFMA membership).
REMEMBER: If you join within the next 30 days, you will receive a 50% discount on the dues.
When joining, we ask that you consider a \$25 donation to the IFMA Foundation, a non-profit, responsible entity from IFMA, whose mission is to advance the field and provide education.

\$179.00 IFMA
Local Chapter Dues
\$55.00 per council
\$25.00 Foundation
Donation
Approx. \$259.00 Total



Membership Lead
Glen Dirks,
VP Customer Success, Better Workplace



A global Workplace community focused on
Increasing Workplace Innovation & Consciousness

Welcome to IFMA!



President and CEO IFMA
Tony Keane, CAE



Chair IFMA
Marc Liciardello, CFM, MBA, CM



A global Workplace community focused on
Increasing Workplace Innovation & Consciousness

Welcome to IFMA!



Vision

Serve as the resource and
representative for facility
management

Mission

Advance the facility management
profession



A global Workplace community focused on
Increasing Workplace Innovation & Consciousness

IFMA

- Founded in 1980
- 23,107 members in 85 countries
- 130 chapters and 17 councils
- 2,956 Certified Facility Managers®
- 3,728 Facility Management Professionals
- Members manage 37 billion sq. ft. of built space
- US\$100 billion annual purchasing power (members)



A global Workplace community focused on
Increasing Workplace Innovation & Consciousness

Products & Services

Learn

Conferences &
exposition
Education
Accredited programs
Credentials®
CFM®
FMP™
SFP

Connect

Membership
Chapter
Council
Events
Contact lists
Website
Sponsorships

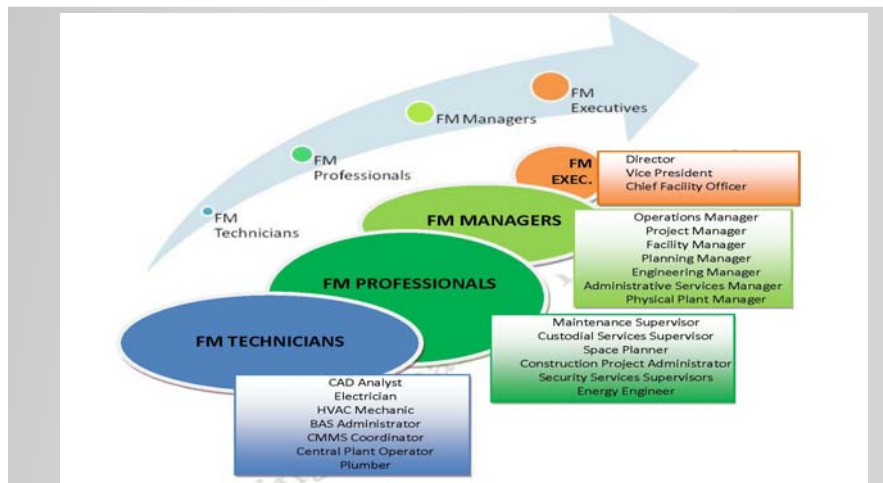
Advance

Research & Advocacy
FMJ
JobNet
Leadership Development
Advertising



A global Workplace community focused on
Increasing Workplace Innovation & Consciousness

The Facility Management Continuum



A global Workplace community focused on
Increasing Workplace Innovation & Consciousness

The IFMA Community

- A **support system of individuals united by a common interest** in strengthening the resources and opportunities available to the FM profession.
- The IFMA community has an invested interest in its own future, **sharing ideas and solutions to improve industry-** and world-wide practices.
- The **collective ingenuity of the community** produces programs and opportunities that reinforce IFMA's position as a leader in education, information and collaboration.



A global Workplace community focused on
Increasing Workplace Innovation & Consciousness

The IFMA Community

- **Chapters** are a local source of facility management education, information and interaction. Chapters are geographically based groups of facility management professionals.
- **Councils** are special-interest groups reflecting the diverse types of facilities and job responsibilities represented by IFMA members. Councils provide opportunities for interaction that transcend geographic boundaries, enabling members to meet other professionals who share an interest in a particular FM practice or who work in the same business sector.
- **What distinguishes councils from chapters?**
Councils focus on FM topics related to a specific industry or interest area. Chapters are geographically based groups of facility management professionals.



A global Workplace community focused on
Increasing Workplace Innovation & Consciousness

The IFMA Opportunity

- The best way to truly benefit from IFMA membership, make a difference in the FM community and make your mark on the profession is to take full advantage of the IFMA opportunity:

GET INVOLVED. GET ACTIVE.

- IFMA provides the opportunities. It's up to you to decide what to take advantage of, based on your individual needs, interests, schedule, budget and level of commitment.



A global Workplace community focused on
Increasing Workplace Innovation & Consciousness

Introducing

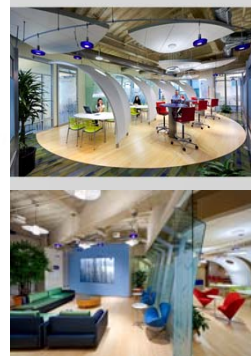
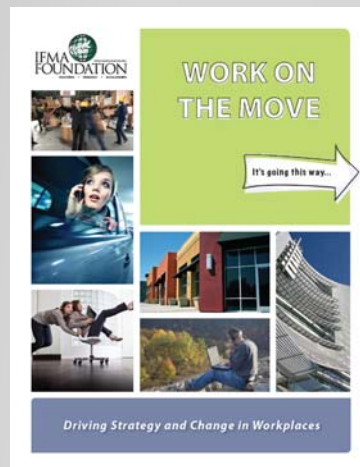


Diane Coles Levine
Sr. WE Advisor, IFMA Foundation Board
Member, CREC Treasurer

Director, Workplace Solutions, SCAN Health Plan



A global Workplace community focused on
Increasing Workplace Innovation & Consciousness



A global Workplace community focused on
Increasing Workplace Innovation & Consciousness

PLANON

IFMA

Kimball Office

MANHATTAN

WOLCITY

Bronze Sponsors

- Gensler
- Hayworth
- Kayhan International
- Panduit
- United Interiors

WE workplace evolutionaries

IFMA International Facility Management Association

A global Workplace community focused on Increasing Workplace Innovation & Consciousness

The Progression to **WE**

WE workplace evolutionaries

IFMA International Facility Management Association

A global Workplace community focused on Increasing Workplace Innovation & Consciousness



- Accredited FM Degree Programs
- (2-year, 4-year, and graduate degrees)
- Scholarships for Students
- Research and Knowledge Management



A global Workplace community focused on
Increasing Workplace Innovation & Consciousness

Accredited Degree *Programs*

☐ Asia / Oceania

1. Hong Kong Polytechnic University, Kowloon, Hong Kong
2. SIM University, Singapore
3. Temasek Polytechnic, Singapore
4. University of Sydney, Australia

☐ Europe

1. FH Kufstein Tirol, Austria
2. Hanze University Groningen, The Netherlands
3. NHTV Breda University of Applied Science, Saxion, The Netherlands
4. Saxion Universities of Applied Sciences, Deventer, The Netherlands
5. Leeds Metropolitan University, Leeds, UK
6. University College London, London, UK

☐ North America

1. Brigham Young University, Provo, Utah
2. Community College of Philadelphia
3. Conestoga College Institute of Technology, Ontario, Canada
4. Cornell University, Ithaca, New York
5. Ferris State University, Big Rapids, Michigan
6. Georgia Institute of Technology, Atlanta, Georgia
7. Pratt Institute, Manhattan, New York, New York
8. Rochester Institute of Technology, New York
9. Southern Polytechnic State University, Atlanta
10. University of Minnesota, St. Paul
11. Wentworth Institute of Technology, Boston, Massachusetts
12. TCI – College of Technology, New York, New York



A global Workplace community focused on
Increasing Workplace Innovation & Consciousness

*IFMA Foundation: **Learn More***

www.ifmafoundation.org

Jeff Tafel, CAE
Executive Director
Jeff.Tafel@ifma.org

Steve Lockwood, CFM
Director of Academic Affairs
Steve.Lockwood@ifma.org



A global Workplace community focused on
Increasing Workplace Innovation & Consciousness

Introducing



Jim Ware
President, CREC & Sr. WE Advisor

PhD, Executive Director The Future of Work...unlimited



A global Workplace community focused on
Increasing Workplace Innovation & Consciousness

*WE is a part of the **Corporate Real Estate Council***



A global Workplace community focused on
Increasing Workplace Innovation & Consciousness

*CREC's **Mission***

The Corporate Real Estate Council focuses on the real estate and facility issues affecting the day-to-day operations endemic to corporate America.

Focus areas include: Workplace innovation, national and global real estate leasing/occupancy trends, corporate resource management, service delivery trends and Web-based real estate technology.



A global Workplace community focused on
Increasing Workplace Innovation & Consciousness

Introducing



Michael Schley
IFMA Foundation Research Chair,
IFMA Fellow, Sr. WE Advisor

CEO and Founder, FM: Systems



A global Workplace community focused on
Increasing Workplace Innovation & Consciousness

Workplace Strategy *Summit 2012*

The Premise

Yesterday's Workplace theory has become today's reality.

But . . .

What do we really know about Workplace effectiveness?

Where is the evidence?

So . . .

Workplace Strategy Summit 2012 at Cornell University

And ...

Proceedings book to be published in June 2013



A global Workplace community focused on
Increasing Workplace Innovation & Consciousness

Experts at the Summit



Frank Duffy
Founder, DEGW
Buildings-in-Use: The Necessity of User Research in the Context of Practice

- Office design with layers of time, longevity.
- Office as a pattern of communication.
- *"how much longer can conventional, Twentieth Century spaces and places be justified in an increasingly virtual world?"*



Susan Stucky
Services Design Manager, IBM Research
World Marketplaces: Whither the Workplace

- Crowdsourcing and Co-working.
- Market-based mechanisms.
- Work Design - Issues of matching skills and projects.
- Atomization of Work
- Challenge of losing context.



Noboru Konno
President, KIRO, Japan
Professor, Kyoto Institute of Technology
Organizational Knowledge Creation and "ba" or Shared Context in Motion

- Knowledge Based Organizations
- Model of Knowledge Creation
- Tacit/Explicit
- Role of Place in Knowledge Creation



Alexi Marmot
Founding Director, AMA,
Professor and Department Head, University College, London
WhenWork, WhereWork: The Time and Place of Work

- Global trends reducing hours at work.
- *"Chronotomology"*- Time + Work + Place



A global Workplace community focused on
Increasing Workplace Innovation & Consciousness

Experts at the Summit



Warwick Johnson
Regional Director, Brookfield Multiplex, Australia
Delivering High-Performance Buildings: The One Shelly Street Experience

- Understanding what a "high performing building" is.
- Sustainability
- Activity Based Working
- Follow-up Surveys



Michael Joroff
Director Emeritus, MIT
Laboratory for Architecture and Planning
The Importance of Every Place in a Blended Physical-Virtual World

- Supporting "platforms"-
- Physical (Facility) + Virtual (IT)
- The Idea of "Best Practice", oversimplifies,
- *"There is no best practice, there's only good practice in the situation you're in."*



Frank Becker
Professor and Co-Founder, Cornell University Facility Management and Planning Program
Director, Cornell International Workplace Studies Program
[R]evolution: Using Science and Imagination to Improve Workplace Performance.

- Use of space to promote informal learning.
- Need for real evidence- risks of just talking to project champions.
- Importance of funding research.
- *The need for Practice-based rather than academic-based research.*



Philip Ross
CEO, Cordless Group, UK
Real-Time Real Estate (RETR)

- Vision of Future Real Estate**
- Self-aware Buildings
 - Thin Clients
 - Consumerization
 - Driven by technology from outside the real estate field.



A global Workplace community focused on
Increasing Workplace Innovation & Consciousness

Content Explored in *Working Groups*

How Group Work
is Done in a
Distributed
Environment



Michael Joroff, Susan Stucky, Philip Ross and Frank Duffy

Issues of
Mentoring and
Company Culture



Jim Ware, Alexi Marmot, Noboru Konno, Bethany Davis Swanson, Rosemary Kirkby

What to Measure,
How to Measure



Frank Becker, Ellen Keable, Gary Evans, Stephani Robson, Ziona Strellitz



A global Workplace community focused on
Increasing Workplace Innovation & Consciousness

Roundtables



A global Workplace community focused on
Increasing Workplace Innovation & Consciousness

Unstructured Time



A global Workplace community focused on
Increasing Workplace Innovation & Consciousness

What's Next

- Summit Proceedings Book- June 2013
- Defining the Research Agenda
- Workplace Evolutionaries



A global Workplace community focused on
Increasing Workplace Innovation & Consciousness

Introducing



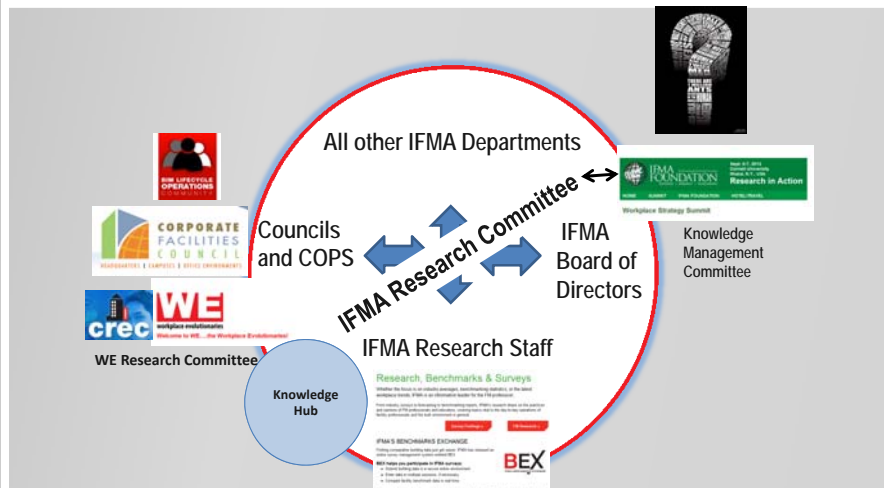
Nancy Johnson Sanquist
IFMA Foundation Research Lead/ Sr. Advisor

IFMA Fellow, AIA Associate, Vice President Marketing and Communications, Manhattan



A global Workplace community focused on
Increasing Workplace Innovation & Consciousness

WE in IFMA



A global Workplace community focused on
Increasing Workplace Innovation & Consciousness

WE in development

- IFMA Foundation Research
- Purpose
- how it is structured
- process of redefining
- how WE will be engaged and woven into the research strategy
- Introduce Andrew Laing – Research Advisor
- Inform the research agenda



A global Workplace community focused on
Increasing Workplace Innovation & Consciousness

What's Next...

April 2-4, Facility Fusion in Los Angeles

- Tuesday
 - Hottest Trends in Real Estate
 - Workplace Innovation Around the World
 - Getting Ahead of FASB Changes
- Wednesday
 - IT, HR, & CRE/FM: Making Beautiful Music Together
 - Mixing it Up: The Future of Mixed-Use Buildings
 - It's the Data, Stupid
 - In pursuit of a more Sustainable Academic Workplace
- Thursday
 - Redefining FM Education
 - **Workplace Evolutionaries Launch!**



Thursday, April 18th – 11:30 EDT

WE:binar : The rise, and rise again, of the City: Frank Duffy

Frank will share his ideas on the impact of shifting demographics on the form and population of cities using as a reference his observations as an Architectural advisor to the recent London Olympics



A global Workplace community focused on
Increasing Workplace Innovation & Consciousness

Questions?



WE
workplace evolutionaries

IFMA
International Facility Management Association

A global Workplace community focused on
Increasing Workplace Innovation & Consciousness

THANK YOU!

WE
workplace evolutionaries

A global Workplace community focused on
increasing Workplace Innovation & Consciousness

What's Next...

April 2-4

April 18th

1. The rise, and rise again, of the City: Frank Duffy (confirmed)

Frank will share his ideas on the impact of shifting demographics on the form and population of cities using as a reference his observations as an Architectural advisor to the recent London Olympics

Planned

1. Well being: John Blumenfield, Sue Schmidt, Dr Karen Lee, Joanna Frank

A discussion of well-being in the Workplace and what organizations are doing to improve the lives of their staff

2. Chronatology: Alexi Marmot

Alexi will examine what is seen as a global trend to lower the number of working hours (not me I hear!) but to reinvent the relationship of time, work and space

3. What's hot in research: Frank Becker

Frank will share what's going on at Cornell in Workplace-related research and also his awareness of what others are thinking about in other research organizations

4. LiquidSpace: Mark Gilbreath

As the founder of one of the most innovative Workplace solutions we have seen for some time, Mark will share the story of it's creation and where it's going to lead us all

5. Human Capital Trends: TBD

We are all detecting, at last, a real concern for people: what they think, what they like and how they work. With the impending retirement of the baby boomers, we are about to get a crash-course in how to make ourselves an attractive place to work.



A global Workplace community focused on
Increasing Workplace Innovation & Consciousness